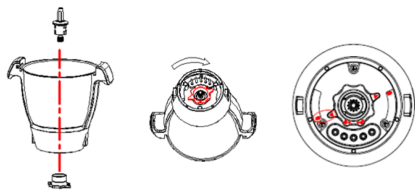
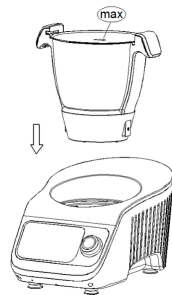


1



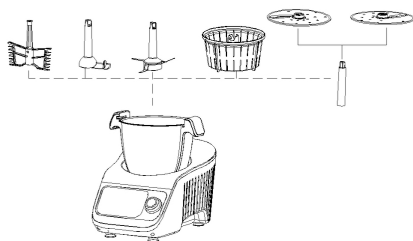
Make sure that the appliance is disconnected from the mains and switched off (power switch (9) in "0" position). Insert the drive shaft and the gasket into the hole at the bottom of the container and lock it with the fixing nut.

2



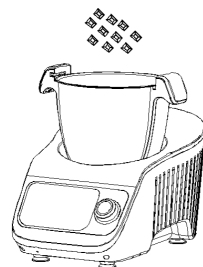
Insert the container (8) into the body. The container (8) can only be inserted in one position - the scale should be visible on the rear panel.

3



Place the selected attachment on the drive shaft mounted in the container (8) or put the steam basket (7) into the container (8).

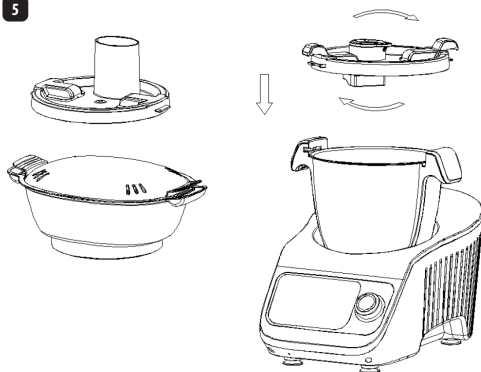
4



Place the ingredients in the container (8). When using the shredder, grate the products by putting them through the tunnel in the shredding lid (23).

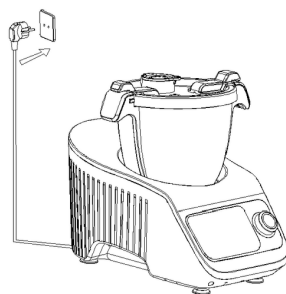
CAUTION! The appliance is equipped with a built-in lock. This function ensures that the appliance can only be turned on if it is assembled correctly. When assembled correctly, the built-in microswitch is unlocked. Do not remove the lid (2 or 23) of the unit during operation, as hot contents and the rotating attachments may pose a threat to life and health. The lid (2 or 23) can only be removed when the appliance is switched off and the mounted attachment stops.

5



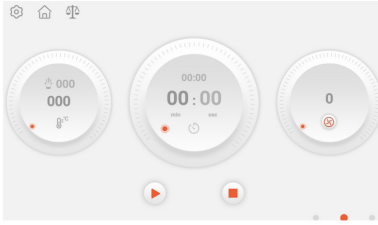
Attach the lid (2) with the gasket (3) or the steam kit (16+17+18+19) or the shredder lid (23) to the container with the gasket (22).

6



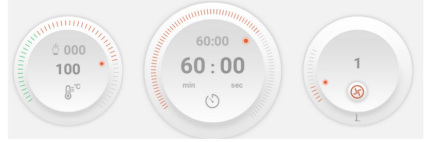
Connect the power cord to the mains according to the parameters given in the manual, and then switch it on using the button (9).

7



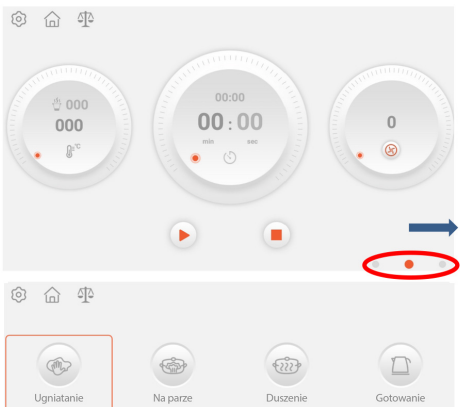
Move the corresponding icon or rotate the knob to set temperature, time and speed.
To quickly set the exact time, click the minute or second on the time icon.
To set the reverse rotation, click on the icon – ↺ setting the reverse rotation is indicated by the ↻ icon.

8



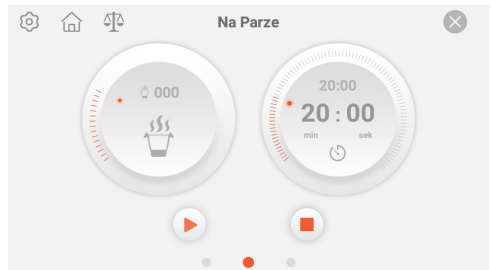
To start operation, after setting the temperature, time and speed, click the button ▶, the icon changes to – || the device is working.
If you click the button || or press the knob, the appliance stops working. After pressing the button ■ or pressing the knob continuously for a long time, the appliance stops and ends the set program.

9



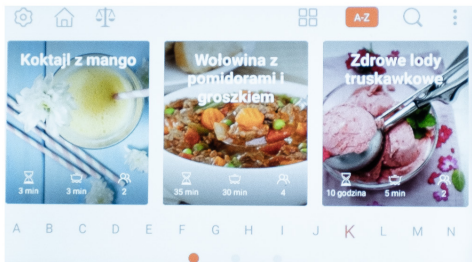
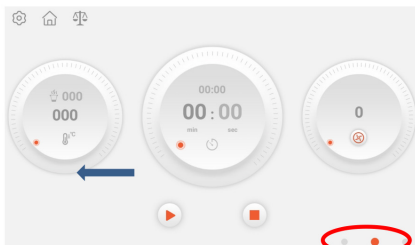
To activate the "**Automatic Programs**" interface, swipe right, or press the right dot (as marked in the figure) or turn the knob to the right.
When you press the button 🏠 or the middle dot (as marked in the figure), the home page is displayed.

10




After switching on the "**Automatic Programs**" interface, select one of them by pressing the icon – the parameters that can be set in a given program will be displayed.
Follow the guidelines in steps "6" and "7".
When the button is pressed 🏠, the appliance goes to the home page.

11




To activate the "Automatic Recipes" interface, swipe left, or press the left dot (as marked in the figure above) or turn the knob to the left.


When you press the button  or the middle dot (as marked in the figure above), the start page is displayed.

12

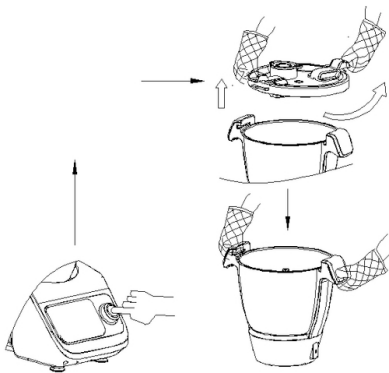


When the "Automatic Recipes" interface is activated, choose one of them by pressing the picture. The details of the recipe will be displayed.

To activate, press the button  and then follow the instructions shown on the screen.

To tag a recipe as a favourite, press the  button

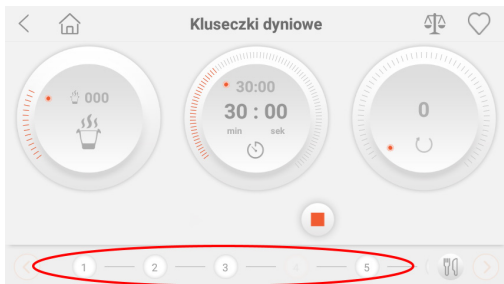
14




When you have finished cooking, a message will appear on the screen indicating that you have finished working.

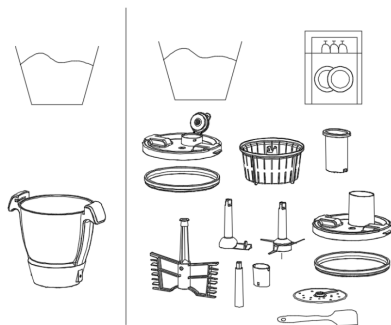
To stop the process earlier, press the knob. The next press starts working at the moment of interruption. To interrupt the process completely, press and hold the knob.

13



The recipes have preset parameters. To see all the preparation steps, press the button . The number at the bottom of the screen indicates a working step.

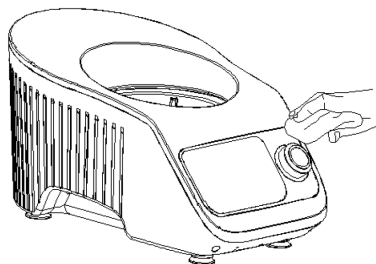
15



Once you have finished cooking, wash the appliance and accessories – the items shown in the figure are dishwasher safe.

The container (8) is NOT dishwasher safe.

16



Do NOT immerse the unit in water or other liquids.

For detailed cleaning guidelines, see the **CLEANING AND MAINTENANCE** section.

perfect mix 